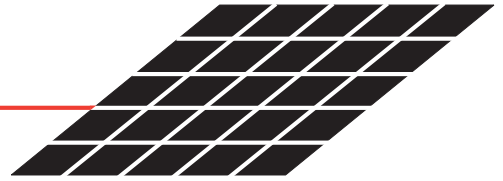


SWIRL DIFFUSER

WITH ACTUATOR



The Camino swirl floor diffusers with actuators are designed for use in raised access floor air distribution systems, where the floor cavity is used as a pressurized supply air plenum. An integral modulating actuator provides variable air volume control in cooling applications for precise zone temperature control. The diffuser core design produces a high velocity helical “swirl” discharge air pattern. The design achieves high indication rates of room air, which optimizes mixing for maximum comfort conditions.

An architecturally appealing face design compliments any contemporary decor and is available as standard in a gray or black finish as well as a wide variety of custom colours.

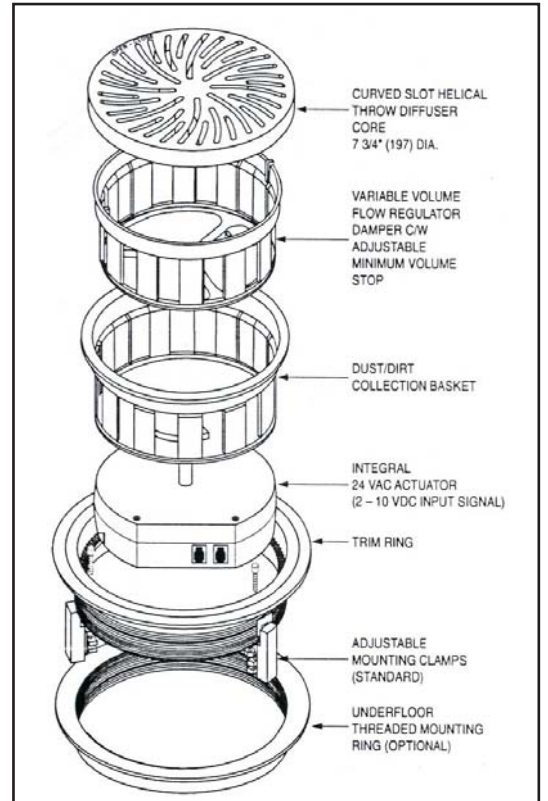
Allowing extreme flexibility in space planning, the diffuser, once installed in the access floor panel, can be quickly relocated to accommodate changing conditions and floor layouts.

C A M I N O M O D U L A R S Y S T E M S I N C .

89 CARLINGVIEW DRIVE, TORONTO, ON M9W 5E4 TEL (416) 675-2400 FAX (416) 675-2424

CONTROL FEATURES:

- 75 CFM.
- Constructed of high impact polycarbonate plastic complying with UL Standard 94-5V for flammability.
- Nominal size 8" (203) dia. Low Profile design.
- Dust/dirt collection basket catches anything that might fall through diffuser face. Removable for cleaning.
- Variable volume flow regulator damper, features visual open/closed indication and includes built in end stops.
- Compact 24 VAC direct drive proportional actuator.
- Minimum and maximum airflow limits are achieved by limiting the range of the control signal.
- Actuator features two RJ12 ports for simple interconnection using modular plenum rated cables. Multiple units can be daisy-chained together.
- Optional thermostat, thermostat cable and power supply modules are available.
- Low pressure drop core/damper assembly design.
- Architecturally pleasing face design compliments contemporary decor and lies flush with trim edge flange.
- Rugged trim ring design secures carpet and prevents edges from fraying.
- Unique adjustable mounting clamp design adapts to any floor panel thickness and provides simple and secure installation. Permits installation from above the floor without removal of the floor panel or carpet.
- Optional underfloor mounting ring available.
- Standard finish is gray or black core and trim ring. Damper/basket are black.



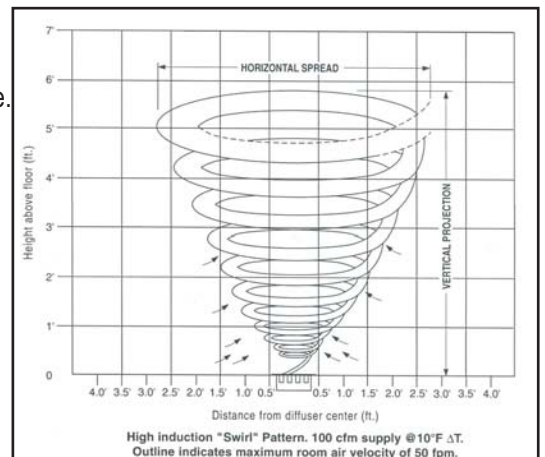
PERFORMANCE DATA

| Airflow, cfm | 30 | 40 | 50 | 60 | 70 | 80 | 90 | 100 | 110 | 120 |
|--|-------------|-------------|-------------|-------------|-------------|-------------|-------------|-------------|-------------|-------------|
| Plenum Pressure | 0.012 | 0.020 | 0.029 | 0.040 | 0.050 | 0.063 | 0.077 | 0.093 | 0.108 | 0.125 |
| Vertical Projection, ft. @ 150, 100, 50 fpm | 0.1-0.5-1.2 | 0.4-1.0-2.0 | 0.8-1.8-2.8 | 1.2-2.6-3.5 | 1.6-3.4-4.2 | 2.2-4.1-4.8 | 3.1-4.6-5.3 | 3.9-5.1-5.8 | 4.6-5.5-6.2 | 5.2-5.8-6.6 |
| Horizontal Spread, ft. @ 150, 100, 50 fpm | 1.0-1.0-1.5 | 1.0-1.0-2.0 | 1.5-1.8-2.7 | 1.7-2.9-4.1 | 1.9-4.0-5.5 | 2.1-4.1-5.8 | 2.5-3.9-5.7 | 2.9-3.8-5.5 | 3.1-3.7-5.4 | 3.3-3.6-5.3 |
| NC | - | - | - | - | - | - | - | 15 | 18 | 20 |

Correction factor for return air applications. Multiply plenum pressure by 2.65 to determine static pressure drop.

PERFORMANCE NOTES:

- 1) Projection and spread data were determined in a room with a 11" ceiling height AT 10° F ΔT, between supply air and averaged occupied room temperature.
- 2) Vertical projection (throw) is the maximum height above the floor where terminal velocities of 150, 100 and 50 fpm were observed. Horizontal spread is the total width of the fpm isovel.
- 3) Noise criteria (values) based on 10 dB room absorption, re 10⁻¹² watts. Dash (-) in space denotes an NC value of less than 15.
- 4) Pressure is in inches w.g..
- 5) Tests conducted with dirt basket/damper installed. Damper fully open. Ak=0.104
- 6) Data derived from independent tests conducted in accordance with ANSI/ASHRAE standard 70-1991.



CAMINO MODULAR SYSTEMS INC.

89 Carlingview Drive, Toronto, ON M9W5E4
 TEL: 416-675-2400 FAX: 416-675-2424

www.camino-access-floors.com

SHEET TITLE

Round Floor Diffuser with Actuator, Model #NFD-VAV

PROJECT: